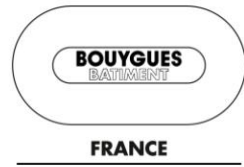




# Electro tools

Electro Tools V0 02/18/2025 G.Herpin



# Portable Power Tools

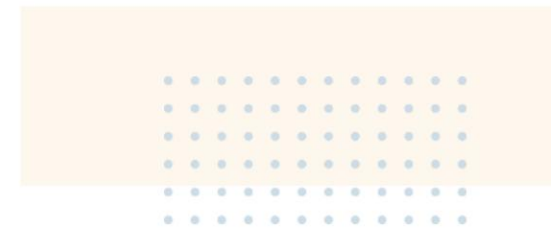
The purpose of this document is to support construction sites in equipping themselves with portable power tools on timber construction sites.



Machine validée *Construction bois*



# Portable Power Tools



Rappel logos catalogue



SYSTEME D'ASPIRATION OBLIGATOIRE

Système de captation et d'aspiration obligatoire pour le travail du bois ou matériaux contenant de la silice



VIBRATION

Valeur de vibrations > 10m/s<sup>2</sup> = exposition maximale cumulée par jour et par compagnon réduite



Points de vigilance spécifique à l'outil



Accord de la Direction Prévention Santé Sécurité préalable obligatoire



Poids de l'outil nécessitant des mesures particulières



FORMATION

Formation spécifique approfondie obligatoire réalisée par DISTRIMO, le fournisseur ou le distributeur



Solution de substitution à la meuleuse 125



Machine vendue sans batterie ni chargeur



Wood Construction

Machine validée *Construction bois*



AMPShare

Plateforme de batterie AMPShare commune à plusieurs marques



FRANCE

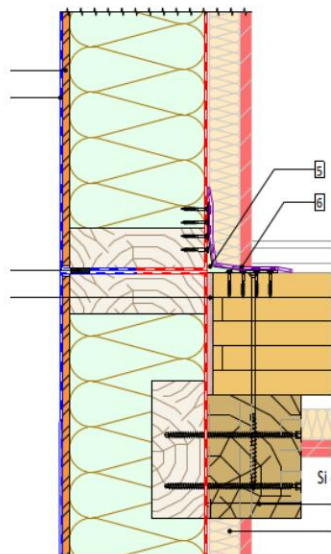


# Tool type



## Screw

- The screw is the most common assembly part in wood (80% of assemblies)
- No wood screwing can be done with a bolter
- The Mafell A18 is the specific wood screwdriver capable of adapting to all the screwing and drilling needs of a wood site (safety, angle drive, screwing power, etc.)



Ref: EL132185

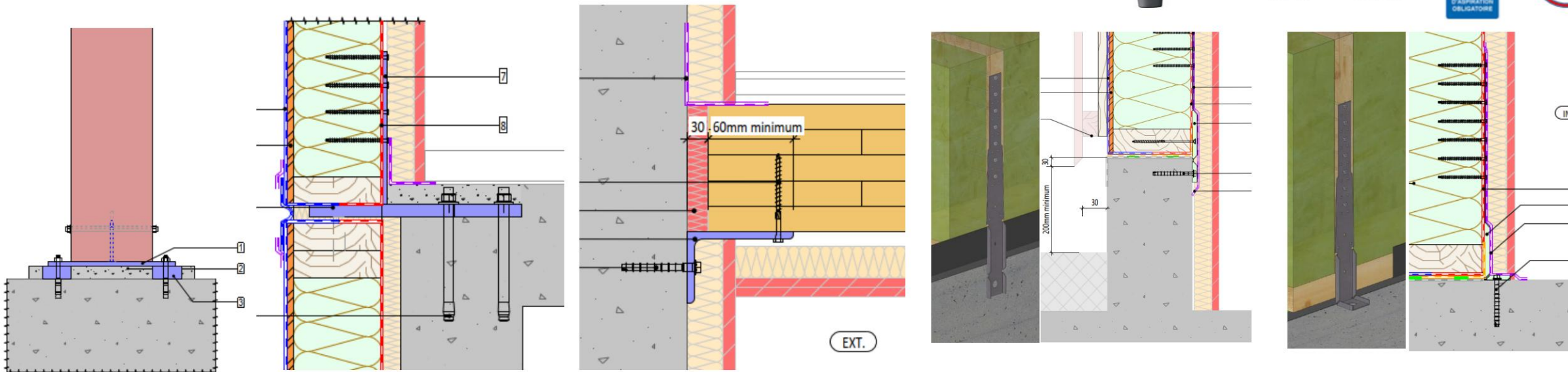


# Tool type



## Drilling and Bolting into Concrete

- Bolting represents 95% of metal/wood and wood/concrete assemblies •
- Anchors are most often concrete screws or dowels



EL150070



Durée d'utilisation maximale : 1h14 par jour (par compagnon en cumulé)



EL126980



Durée d'utilisation maximale : 1h14 par jour (par compagnon en cumulé)

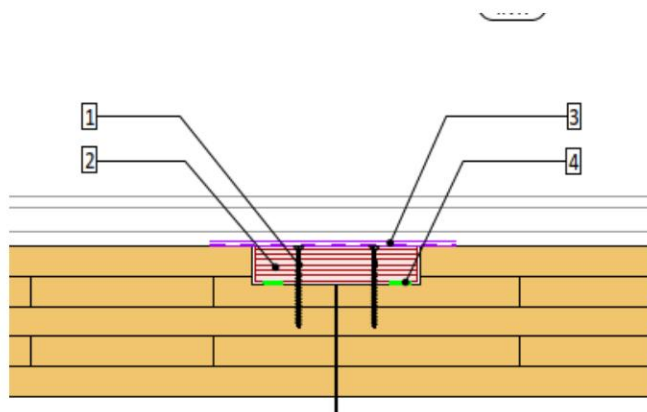


# Tool type

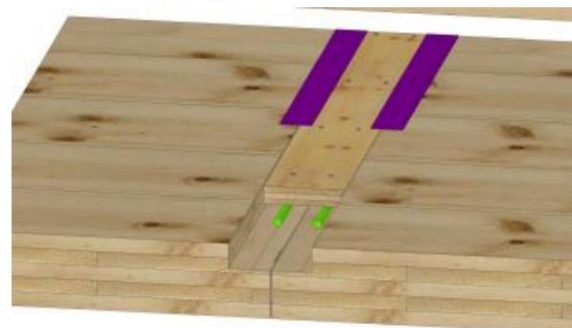


## Sewing screw

- In CLT flooring as in CLT walls, panel seams with  
Tongue and grooves can be done with a roller feed screwdriver.
- There is also an extension for working at height



EL128404



EL126640



EL018193



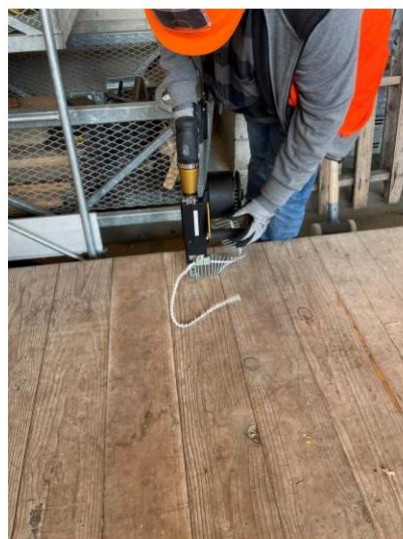
EL126641

# Tool type



## Sewing screw

- This type of screwdriver requires a good grip to understand all the settings and make good use of them:
  - Mounting the extension
  - Position of the roller (5\*80 screws)
  - Screwing depth
  - Changing the tips



# Tool type



## *Trim (Cut / Edge 80mm)*

- The common circular saws for retouching or cutting wood thicknesses 80 to 160 mm (in two passes) are the Hikoki and the Hilti (replacement circular for the Makita 80)



EL145837



SYSTEME  
D'ASPIRATION  
OBLIGATOIRE



EL009765



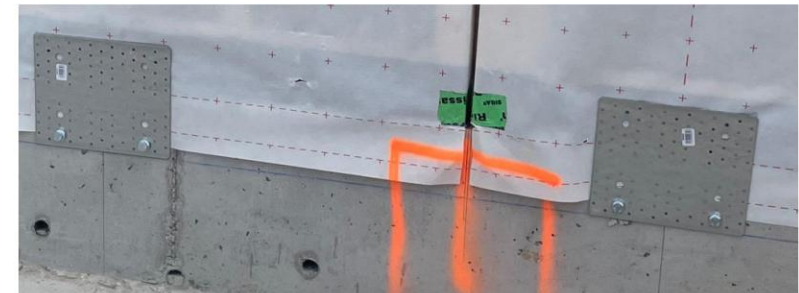
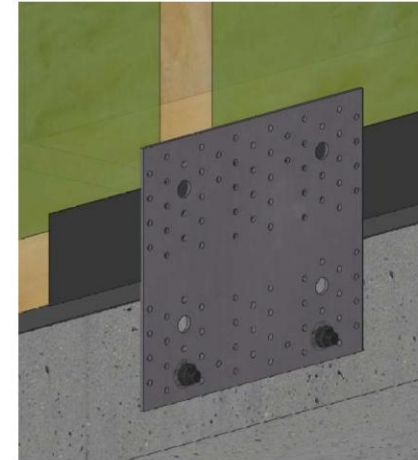
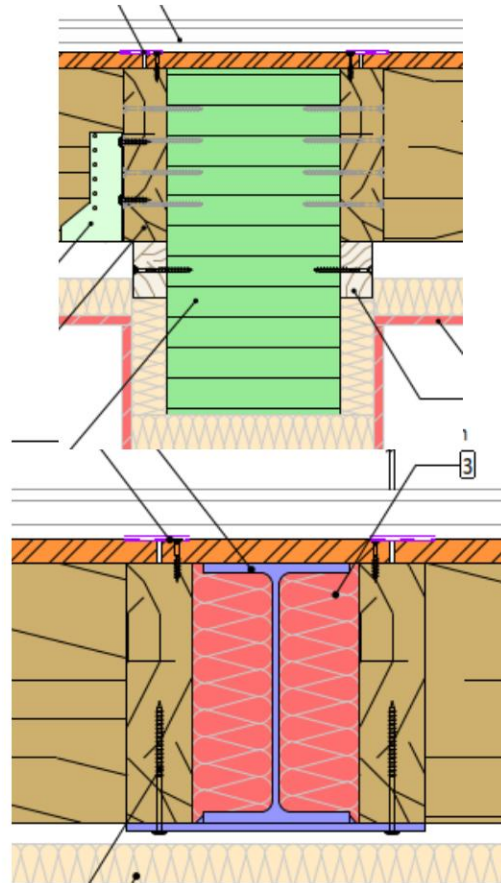
SYSTEME  
D'ASPIRATION  
OBLIGATOIRE



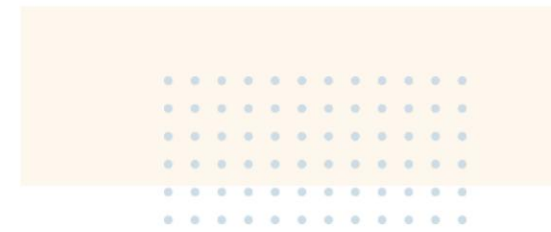
# Tool type

## Nail

There are two types of nailing to differentiate: anchor nailing and seam nailing. There is no nailer that can do both tasks (pressure and nail format).



# Tool type



## *Pneumatic nailers*

- The pneumatic nailer allows you to have rolls of up to 100 nails (less reloading)
- The pneumatic nailer has good repeatability regardless of the temperature
- Requires a compressor and a connection hose

EL106879



**Compressor**



**Winder**



**C28/70  
Seam Nailer**



Formation  
spécifique  
approfondie  
obligatoire

EL123330



**Perforated sheet metal anchor nailer  
C41/65 P1**

# Tool type



## Gas nailing

Gas nailing means you don't need a compressor and allows for greater freedom of movement (no air hose). However, you must plan for:

- gas cartridges as consumables
- nail reams are 25-50 nails
- use in very cold weather requires keeping the gas cartridge warm

EL018194



EL114426



EL114425



Formation  
spécifique  
approfondie  
obligatoire

# Tool type



## Strive

- Concrete drilling and wood touch-ups require the use of vacuum cleaners. • Wood touch-ups are on a fixed workstation; large vacuum cleaners are preferred.
- Concrete drillings are often linear and can be at height, a mobile suction can be judicious



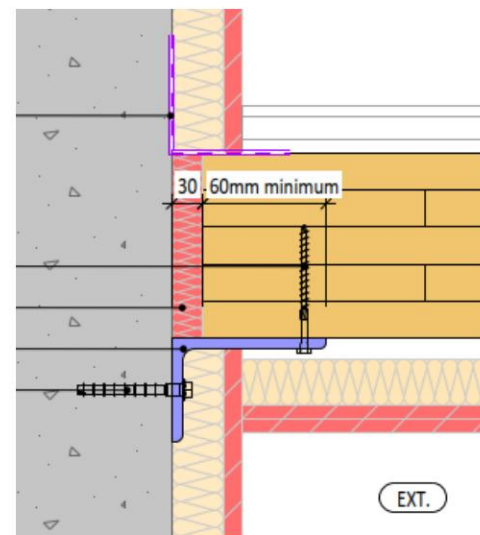
**EL117494**



**EL153157**



**EL153146**



EXT.

# Specific tools



## *Cut and Edge CLT or LC*

- Two frame saws are referenced today (Festool and Mafell) • These saws are made to make repeat cuts on thick wooden elements such as CLT or Glued laminated timber
- Very clearly to be preferred in terms of precision and safety and compared to the chainsaw which will still remain essential in certain cases

### **Festool UNIVERS SSU 200**

Ref: EL123759

Capacity: 20cm



### **MafellZSX Ec / 400 Q**

Ref: EL132195

Capacity: 40cm



# Specific tools



## Cut and Edge CLT or LC

### Festool UNIVERS SSU 200

Ref: EL123759

Capacity: 20cm



SYSTEME D'ASPIRATION OBLIGATOIRE

Système de captation et d'aspiration obligatoire pour le travail du bois ou matériaux contenant de la silice



DISTRIMO rental required, Wearing class 1 anti-cut PPE required



FORMATION

Formation spécifique approfondie obligatoire réalisée par DISTRIMO, le fournisseur ou le distributeur



Accord de la Direction Prévention Santé Sécurité préalable obligatoire

# Specific tools



## Cut and Edge CLT or LC

### MafellZSX Ec / 400 Q

Ref: EL132195

Capacity: 40cm



SYSTEME  
D'ASPIRATION  
OBLIGATOIRE

Système de captation et d'aspiration obligatoire pour le travail du bois ou matériaux contenant de la silice



DISTRIMO rental required, Wearing class 1 anti-cut PPE required



Formation spécifique approfondie obligatoire réalisée par DISTRIMO, le fournisseur ou le distributeur



Accord de la Direction Prévention Santé Sécurité préalable obligatoire



Poids de l'outil nécessitant des mesures particulières

# Specific tools



## *Cut and Edge CLT or LC*

These machines are designed like a circular, they have a table with angle tilt, a protective cover at the end of the guide, as well as a dividing knife.

They can be mounted on a guide rail or used with a parallel guide

*Please note that these machines do not allow you to dive into wood.*





# Specific tools



## *Resumption of notches*

- The chainsaw remains essential in certain cases, it allows you to dive and make mainly occasional machining operations in the core (insertion of fittings) or making a light to be able to lower a frame saw into the wood.
- The wooden elements are often structural and the repairs must be done with care and precision at the risk of jeopardizing the work. It is necessary to favor the electric chainsaw which is certainly less powerful but much more precise.
- Significant advantage of an electric chainsaw: less vibrating, less noisy and much faster chain stop.

### HUSQVARNA 535iXP35SN Chainsaw

Ref: EL129411



DISTRIMO rental required, Wearing class 1 anti-cut PPE required



Formation spécifique approfondie obligatoire réalisée par DISTRIMO, le fournisseur ou le distributeur



Accord de la Direction Prévention Santé Sécurité préalable obligatoire

# Specific tools



## Groove

The NFU 50 MAFELL groover (distrimo ref: EL132191) can be used to resume forgotten machining such as grooves or rebates in wood.



SYSTEME  
D'ASPIRATION  
OBLIGATOIRE

Système de captation et d'aspiration obligatoire pour le travail du bois ou matériaux contenant de la silice



FORMATION

Formation spécifique approfondie obligatoire réalisée par DISTRIMO, le fournisseur ou le distributeur



Accord de la Direction Prévention Santé Sécurité préalable obligatoire

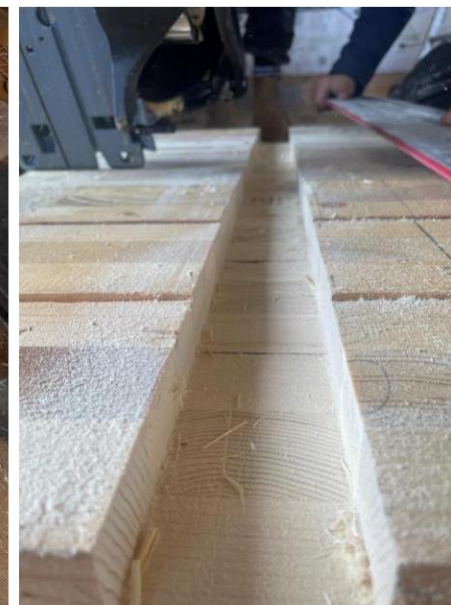
# Specific tools



## Groove

This one is designed like a circular, it has a table with angle tilt, a protective cover, as well as a depth adjustment which makes it much more suitable, precise and safe than a plane to go down into the wood.

It can be mounted on a square rail or on a guide rail.



# Specific tools



## Plane

- The plane is a tool for reworking a section of wood or refining machining, for example enlarging a chamfer
- It is not to be used to retake or make a groove.
- Please note that unlike the Mafell groover, the planes are not equipped with a shaft housing. can continue to turn for a few seconds while braking.



**EL018366**





*Thank you for your attention!*

*The objective of the wood training is to have mastered all the tools presented previously.*