

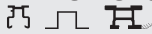
Fall arrester Model 0529.74

HACA MultiSafe

Benefits

- ▶ Excellent running properties
- ▶ Has 3 catching functions:
 1. Catching function: In case of vertical fall the 1. catching function responds
 2. Catching function: In case of falling backwards (fall-back and sit-back) the device catches due to an automatic draught limiter
 3. Catching function: A centrifugal brake releases a braking impulse at high speed and brings catching function 1 into action
- ▶ Approved for persons from 40 kg to 150 kg
- ▶ The value of 5 kN is 17 % below the maximum impact force with a 100 kg steel dummy, claimed in EN 353-1
- ▶ Extreme safety is provided as the guided type fall arrester can be used right after a fall. Consequently a second fall is also safe
- ▶ The snap-hook has a swivel
- ▶ The new karabiner installed since the end of 2016 has a weight saving of ~ 10 % and has a larger opening
Details see E.06
- ▶ Very smooth-running, hence no exhaustion and only low level of strain when climbing
- ▶ Very good running properties due to roll guides at each side and long axis distance
- ▶ Contact to the guiding rail via ball-bearing rolls
- ▶ Correct insertion into the fall arrest rail is compulsory and therefore guaranteed
- ▶ Arms and legs are relieved when climbing
- ▶ Can be used up to 15° layback and 20° lateral position
- ▶ Can additionally be used for horizontal fall arrest rails

Application

- ▶ Can be used on all kind of HACA fall protection profiles

- ▶ For radius min. 750 mm
- ▶ CE certified as climbing protection according to DIN EN 353-1: 2018, also tested according to ANSI/ASSE 2359.1-2007 and CSA Z259.2.4-15.



3-fache Sicherheit durch
3 unterschiedliche Fangfunktionen.

Material	Order No.	€ per unit
Aluminium, stainless steel	0529 7400 00	810,00



**You can find a film
for operators on our
homepage!**

HACA MultiSafe

Properties type

Typ 0529.74, 74.30 und 74.50

Handling and function

The guided type fall arrester has three independent-ly working catching functions (triple redundant). Each reacts to different triggers, which are caused by a potential danger for the user and makes the guided type fall arrester stop. If the horizontal or speed-dependent catching function is primary activated the vertical catching function will always be activated as second redundancy!

1. Catching function: vertical catching function

In case of a fall the user, being attached to the harness by the snap-hook, moves the brake eccentric within the guided type fall arrester. This makes the guided type fall arrester jam like a tong to the rail within few millimetres. Activation and stop of the guided type fall arrester do not happen abruptly, as e.g. in case of fall arrest systems having safety crimping or safety rungs at certain intervals on the fall arrest rail. This guided type fall arrester activates and stops delayed. This reduces the impact load on the falling person. This function is again available without limitation immediately after relieving the guided type fall arrester and the "opening of the tong".

In this moment the guided type fall arrester is again ready for use with all protective systems without any delay.

2. Catching function: horizontal draught limiter

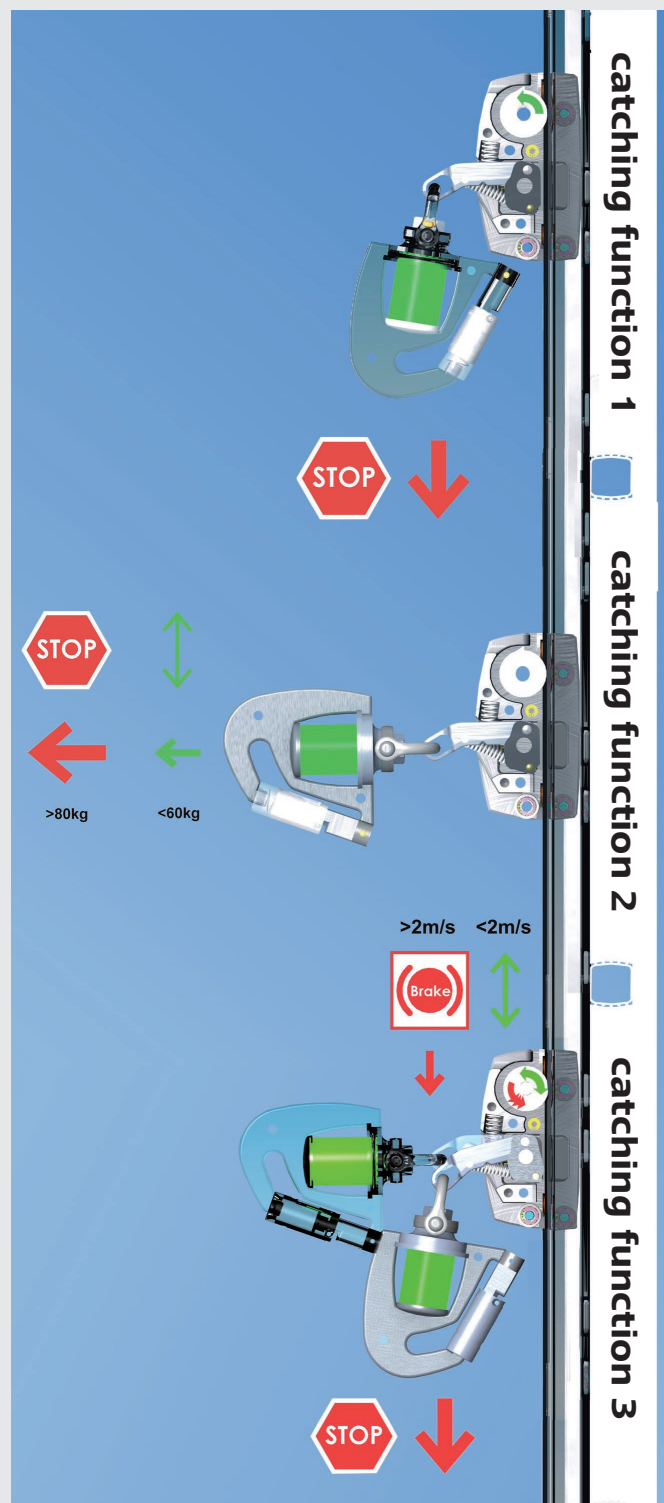
The draught limiter activates automatically and makes the arrester speed down when the user is in danger of falling backwards; this keeps the user from rolling over. The harness for this application must have the properties being described on page E.01. From this position the user can come back to the climbing position at any time. After relieving the guided type fall arrester all safety devices tighten again and are immediately again available without limitation.

In this moment the guided type fall arrester is again ready for use with all protective systems without any delay.

3. Catching function: speed-dependent catching

With the help of a friction wheel the speed of the guided type fall arrester is checked constantly during its use. If the guided type fall arrester operates at a speed higher than normal climbing speed, the guided type fall arrester is decelerated automatically. This deceleration activates the vertical catching function. After relieving the guided type fall arrester all safety devices tighten again and are immediately again available without limitation.

In this moment the guided type fall arrester is again ready for use with all protective systems without any delay.



HACA MultiSafe

Further features

Guided type fall arrester:

The friction wheel of the speed-dependent catching function has two redundant contact surfaces (see detail ①). Furthermore there is an integrated marking for wear and tear becoming visible due to a second surface colour (see detail ②). This makes the degree of wear and tear and hence the moment for exchange clearly visible.

The strain on arms and legs is relieved when climbing with this guided type fall arrester. The user leans into the harness and creates like this the necessary horizontal tensile force for a free run of the guided type fall arrester.

The guided type fall arrester even can run in bends (rad. min. 750 mm). Backwards movements must be activated manually.

HACA snap-hook with TRI SAFE lock:

The snap-hook of the guided type fall arrester is secured with a HACA TRI SAFE lock (see detail ③). This opening mechanism closes independently and has to be opened for reasons of the user's safety by three intended axial rotary and pushing motions.

The polyamide shock absorbing element (see detail ④) forms back into its original shape after having been exposed to the shock load. It does not tear apart for absorbing the load impact as a textile shock absorber or a deforming element would. The advantage of this fact is that the connection from the user to the guided type fall arrester does not extend inappropriately.

In this moment the guided type fall arrester is again ready for use with all protective systems without any delay.

The swivel (see detail ⑤) makes it easier to change direction from vertical to horizontal and makes it possible to use harnesses with horizontal and vertical attachment points.

Accessories:

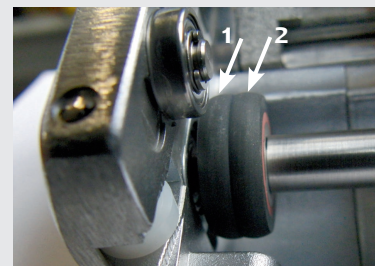
A protection case for the guided type fall arrester can be found on page E.11, tool bag E.14.

Material	Order No.	€ per unit
Aluminium, stainless steel	0529 7400 00	810,00

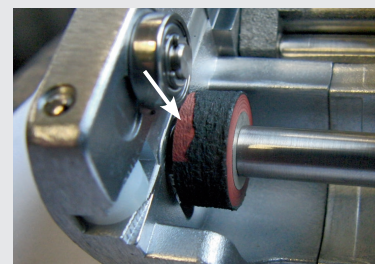


According to DIN 18799: 2019 there must be at least two guided type fall arresters at site. Before opening the guided type fall arrester the user must protect himself against falling with the help of a rope.

Details



① Redundant friction wheel



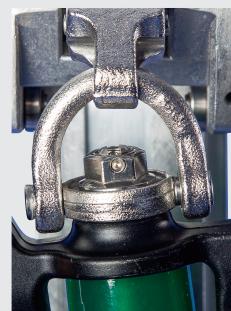
② VMarking for wear and tear on the friction wheel
red = exchange necessary



③ TRISAFE-lock



④ Shock absorber device



⑤ Swivel


HACA MultiSafe Fall arrester

Model 0529.74.50 with opening mechanism

Benefits

- ▶ Excellent running properties
- ▶ Can be removed from any position on the fall arrest rail
- ▶ One-hand operation
- ▶ It is possible to save removal flap and notches
- ▶ Has 3 catching functions:
 1. Catching function: In case of vertical fall the 1. catching function responds
 2. Catching function: In case of falling backwards (fall-back and sit-back) the device catches due to an automatic draught limiter
 3. Catching function: A centrifugal brake releases a braking impulse at high speed and brings catching function 1 into action.
- ▶ Approved for persons from 40 kg to 150 kg
- ▶ The value of 5 kN is 17 % below the maximum impact force with a 100 kg steel dummy, claimed in EN 353-1
- ▶ Extreme safety is provided as the guided type fall arrester can be used right after a fall. Consequently a second fall is also safe
- ▶ The snap-hook has a swivel
- ▶ The new karabiner installed since the end of 2016 has a weight saving of ~ 10 % and has a larger intake, Details see E.06
- ▶ Very smooth-running, hence no exhaustion and only low level of strain when climbing
- ▶ Very good running properties due to roll guides at each side and long axis distance
- ▶ Contact to the guiding rail via ball-bearing rolls
- ▶ Correct insertion into the fall arrest rail is compulsory and therefore guaranteed
- ▶ Arms and legs are relieved when climbing
- ▶ Can be used up to 15° layback and 20° lateral position
- ▶ Can additionally be used for horizontal fall arrest rails

Application

- ▶ Can be used on all HACA fall arrest rails

- ▶ For minimum radius of 750 mm
- ▶ CE certified as climbing protection according to DIN EN 353-1: 2018, also tested according to ANSI/ASSE 2359.1-2007 and CSA Z259.2.4-15.

Handling and function

The fall arrester may be removed from any position of the ladder section. The arrester is designed in a way that a logical sequence must be run through for one-handed opening of the arrester. An internal safety system ensures that the arrester can only be attached in the running direction. In the event of a fall the fall arrester jams on the rail after just a few centimetres. There is a delay when the arrester is engaged and stopped so this does not occur abruptly as, for example, is the case with fall arrest systems whose guide rails have safety crimping or safety rungs at certain intervals. This reduces the impact load on the person falling. Ascending and descending using this arrester relieves the load on arms and legs. The user leans into the belt, thereby achieving the horizontal tensile force necessary for the arrester to run freely.



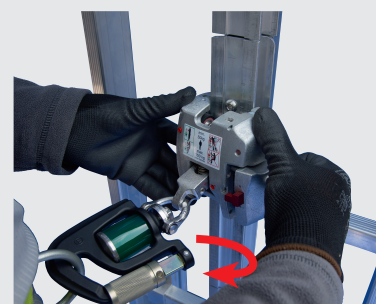
Frontal view



Lateral view



1 – Pull



2 – Remove

Material	Order No.	€ per unit
Aluminium, stainless steel	0529 7450 00	on enquiry